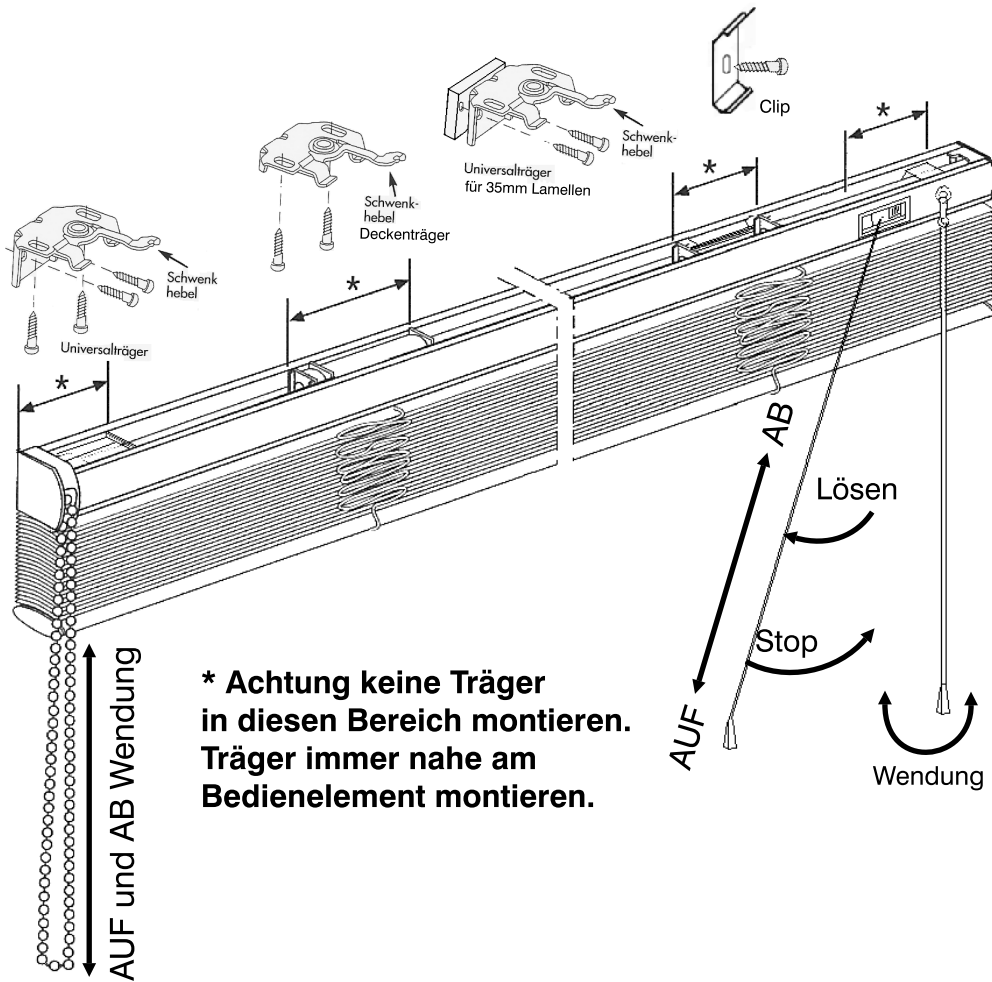
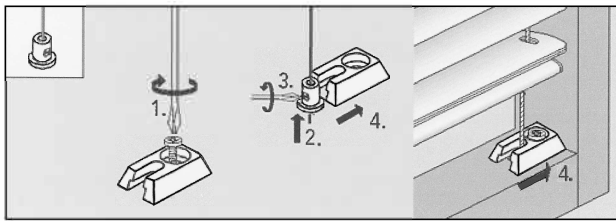


Montageanleitung Maßjalousie

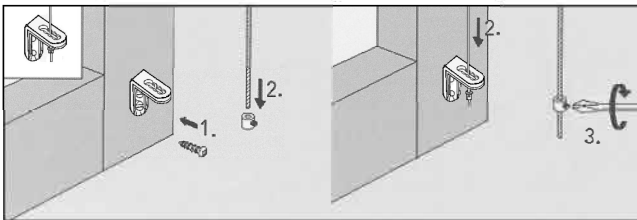


Träger	Breite cm
2	0 - 99
3	100 - 150
4	151 - 210
5	211 - 280

Montage in der Glasleiste

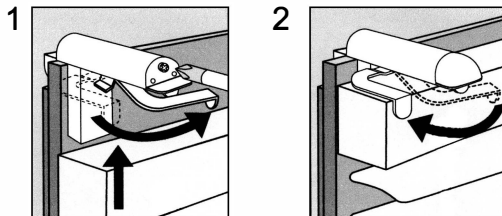


Montage auf dem Fensterflügel

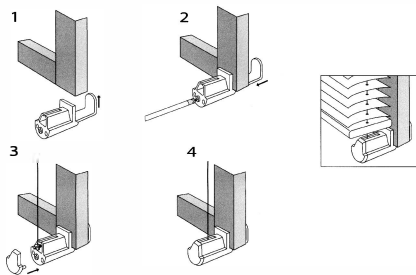


Fensterflügelmontage mit Klemmträger

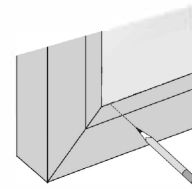
oben



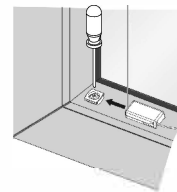
unten



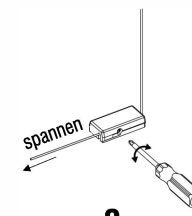
Montage Spannfüße Exklusive Line / Bedienung mit Bediengriff



Markierung **1**



2



3



4